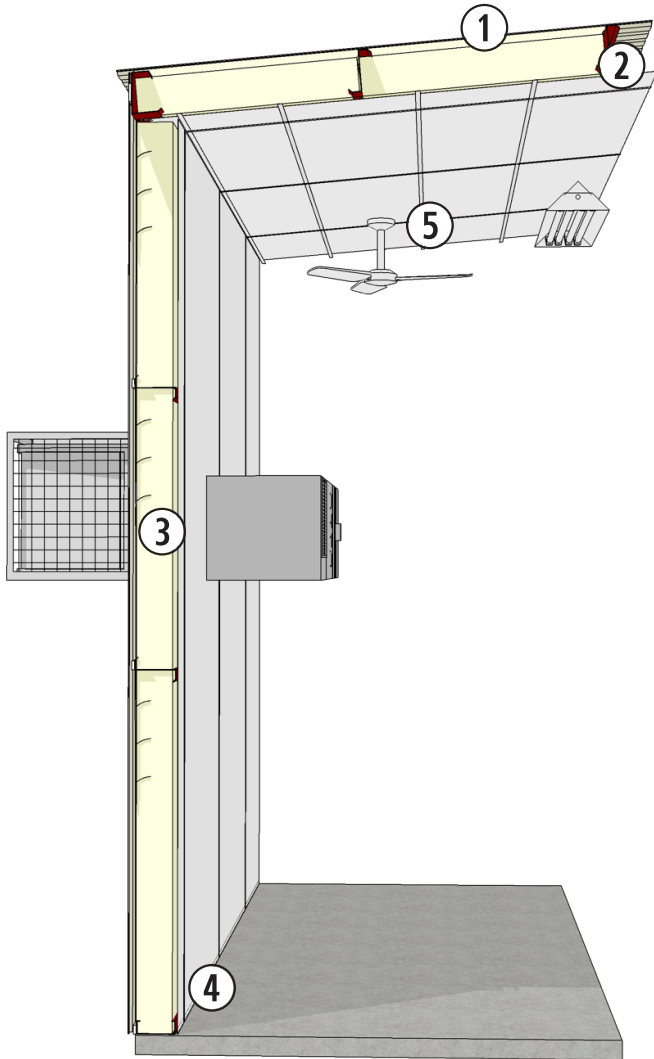


# ITEMS TO CONSIDER WHEN BIDDING **SIMPLE SAVER SYSTEM®**



601 North Main Street | PO Box 468 | Madison, NE 68748  
800.255.0776 | [thermaldesign.com](http://thermaldesign.com)

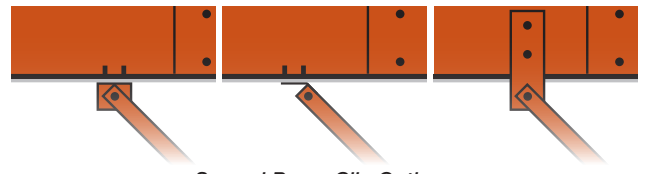


## ① PURLIN SPACING

Request 3-, 4-, 5-, and 6-foot purlin spacings from the manufacturer to match standard insulation widths.

## ② BRACE CLIPS

The movement of the typical flange brace attachment from the purlin web to the bottom of the purlin eases installation of the Syseal® Fabric and provides a more effective vapor retarder for the building. Consult your building manufacturer for brace clip requirements.



Several Brace Clip Options

## ③ HVAC FRAMED OPENING

Request a proper framed opening from your building manufacturer for our properly-sized EnergyCraft® HVAC Appliances.

## ④ BASE CHANNEL

When wall systems are included, ask building manufacturer to include 'C' girts at the foundation.

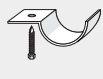
## ⑤ ADVANCE INSTALLATION

Significantly higher production rates are achieved if the Simple Saver System is installed before other trades such as mechanical, electrical and plumbing.

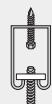
### Common Hanging Methods



Simple Fastener



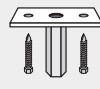
Hole Strap



Channel Strut



Angle Hanger



Threaded Plate Hanger



Threaded Hanger



Bar Joist Hanger

Many common hangers can be used with the Simple Saver System without cutting the vapor retarder fabric. Virtually anything can be attached to the underside of the purlins with negligible effect on the vapor retarder quality. Call Thermal Design at 800.255.0776 for recommended application on any project, and visit [thermaldesign.com](http://thermaldesign.com) to learn more.

### Production Rates in New Buildings

Experienced crews installing a single- or double-layer Simple Saver System during sheeting process (includes labor to install Type 1 thermal block in single-layer systems):

**Roof:** 150-200 sq. ft./man-hour  
**Walls:** 120-170 sq. ft./man-hour